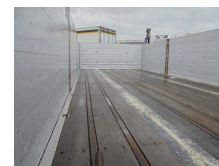


GS AN- 2000 2 AXLE

Preis	€ 9.950,-
Konstruktion	Ladepritsche
Baujahr	2016
Id	TR1344
Anzahl der achsen	2
Kilometerstand	0 km
Kraftstoffart	Übrig
Bruttogewicht	20.000 kg
Nutzlast	15.240 kg
Gewicht	4.760 kg
Länge	817 cm
Breite	255 cm
Konstruktion Länge	653 cm
Konstruktion Breite	247 cm
Konstruktion Höhe	100 cm



Beschreibung

89-WN-SN

= Firmeninformationen =

If you have any questions or suggestions, Don't hesitate to contact us. We guarantee an answer within 8 hours. Prices are without VAT.

No rights could be derived from given information.

Office Phone: 0031165398949

MOB: 0031657945247 (Nederlands - English - Deutsch - Francais - Español - Italiano) Available on What's App and Viber.

MOB: 0031653301652 (Nederlands) Available on What's App and Viber.

When you pay by bank transfer, the money needs to be tranfered to our Bank Account underneath. Always check the



T.: [+31 \(0\)165 39 89 49](tel:+310165398949)

E.: info@trucksroosendaal.nl

Gewenten 37

4704 RE, Roosendaal

Netherlands

payment details that are stated on our website. In case you have received other information please contact us.

In case you have doubts please call us so we can verify the invoice and/or payment.

Bank details:

Rabobank

Laan van Limburg 2

4701BP Roosendaal

IBAN: NL 89 RABO 0174 3347 10

EORI/BTW/TAX: NL81057401B(01)

BIC/SWIFT: RABONL2U