

Krone SDR27 + CARRIER MAXIMA 1300 + STEERING AXLE

Konstruktion	Kühl-/Tiefkühltransport
Baujahr	2005
Id	TR1758
Anzahl der achsen	3
Kilometerstand	0 km
Kraftstoffart	Übrig
Bruttogewicht	42.000 kg
Nutzlast	32.080 kg
Gewicht	9.920 kg
Breite	260 cm

Beschreibung

Kühlmotor: Diesel (11927 Betriebsstunden)

= Firmeninformationen =

If you have any questions or suggestions, Don't hesitate to contact us. We guarantee an answer within 8 hours.

Prices are without VAT.

No rights could be derived from given information.

Office Phone: 0031165398949

MOB: 0031657945247 (Nederlands - English - Deutsch - Francais - Español - Italiano) Available on What's App and Viber.

MOB: 0031653301652 (Nederlands) Available on What's App and Viber.

When you pay by bank transfer, the money needs to be tranfered to our Bank Account underneath. Always check the payment details that are stated on our website. In case you have received other information please contact us.

In case you have doubts please call us so we can verify the invoice and/or payment.

Bank details:

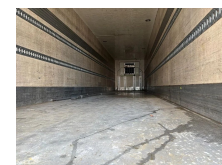
Rabobank

Laan van Limburg 2

4701BP Roosendaal

IBAN: NL 89 RABO 0174 3347 10

EORI/BTW/TAX: NL81057401B(01)





T.: [+31 \(0\)165 39 89 49](tel:+31(0)165398949)

E.: info@trucksroosendaal.nl

Gewenten 37

4704 RE, Roosendaal

Netherlands

BIC/SWIFT: RABONL2U