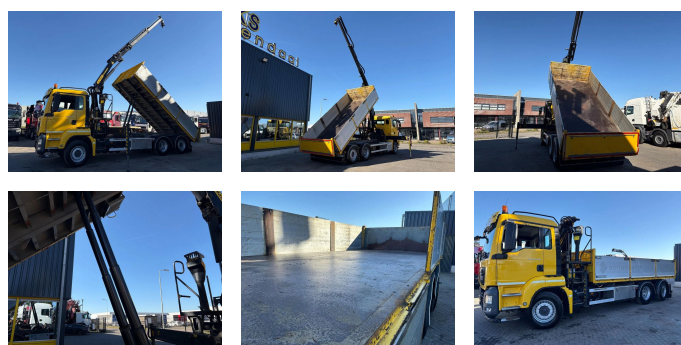


## MAN 26,400 + PALFINGER 16001 + TIPPER + 6X2 STEERING + EURO 6

<b>Konstruktion</b>	Kranwagen
<b>Baujahr</b>	2015
<b>Id</b>	TR1780
<b>Fahrzeug-identifizierungsnummer</b>	WMA18SZZ7FP062234
<b>Radformel</b>	6x2
<b>Anzahl der achsen</b>	3
<b>Getriebe</b>	Automatik
<b>Kilometerstand</b>	347.076 km
<b>Kraftstoffart</b>	Diesel
<b>Schadstoffklasse</b>	Euro 6
<b>Leistung</b>	294 kW (400 PK)
<b>Bruttogewicht</b>	28.000 kg
<b>Nutzlast</b>	14.535 kg
<b>Gewicht</b>	13.565 kg
<b>Länge</b>	858 cm
<b>Breite</b>	255 cm
<b>Zubehör</b>	Aluminium-Kraftstofftank Anhängerkupplung Antiblockiersystem Automat Nebelleuchten Radio/Kassettspieler Zugmaul



### Beschreibung

Kran  
Anzahl der hydraulischen Auszüge: 2  
Anzahl Stützbeine: 2  
Fernbedienung: x  
Rotator: ?  
Meter Kapazität: 11 m  
Kapazität Kilo: 4050 kg



T.: [+31 \(0\)165 39 89 49](tel:+3120165398949)

E.: [info@trucksroosendaal.nl](mailto:info@trucksroosendaal.nl)

Gewenten 37

4704 RE, Roosendaal

Netherlands

= Weitere Informationen =

Kipper: Hinten

= Firmeninformationen =

If you have any questions or suggestions, Don't hesitate to contact us. We guarantee an answer within 8 hours.  
Prices are without VAT.

No rights could be derived from given information.

Office Phone: 0031165398949

MOB: 0031657945247 (Nederlands - English - Deutsch -  
Français - Español - Italiano) Available on What's App and  
Viber.

MOB: 0031653301652 (Nederlands) Available on What's App  
and Viber.

When you pay by bank transfer, the money needs to be  
transferred to our Bank Account underneath. Always check the  
payment details that are stated on our website. In case you  
have received other information please contact us.

In case you have doubts please call us so we can verify the  
invoice and/or payment.

Bank details:

Rabobank

Laan van Limburg 2

4701BP Roosendaal

IBAN: NL 89 RABO 0174 3347 10

EORI/BTW/TAX: NL81057401B(01)

BIC/SWIFT: RABONL2U