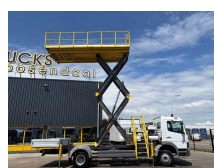


Mercedes-Benz 1318 + 10 METER HEIGHT + tunnel/mine edition + manual

Konstruktion	Hebebühne
Baujahr	2004
Id	TR1902
Fahrzeug- identifizierungsnummer	WDB9700671K962342
Radformel	4x2
Anzahl der achsen	2
Getriebe	Schaltgetriebe
Kilometerstand	80.000 km
Kraftstoffart	Diesel
Schadstoffklasse	Euro 3
Leistung	132 kW (180 PK)
Bruttogewicht	13.500 kg
Nutzlast	3.510 kg
Gewicht	9.990 kg
Länge	8.485 cm
Zubehör	Antiblockiersystem Radio/CD-Spieler



Beschreibung

= Weitere Optionen und Zubehör =

- Signalf Feuer

= Firmeninformationen =

If you have any questions or suggestions, Don't hesitate to contact us. We guarantee an answer within 8 hours.
Prices are without VAT.

No rights could be derived from given information.

Office Phone: 0031165398949

MOB: 0031657945247 (Nederlands - English - Deutsch -



T.: [+31 \(0\)165 39 89 49](tel:+310165398949)

E.: info@trucksroosendaal.nl

Gewenten 37

4704 RE, Roosendaal

Netherlands

Français - Español - Italiano) Available on What's App and Viber.

MOB: 0031653301652 (Nederlands) Available on What's App and Viber.

When you pay by bank transfer, the money needs to be transferred to our Bank Account underneath. Always check the payment details that are stated on our website. In case you have received other information please contact us.

In case you have doubts please call us so we can verify the invoice and/or payment.

Bank details:

Rabobank

Laan van Limburg 2

4701BP Roosendaal

IBAN: NL 89 RABO 0174 3347 10

EORI/BTW/TAX: NL81057401B(01)

BIC/SWIFT: RABONL2U