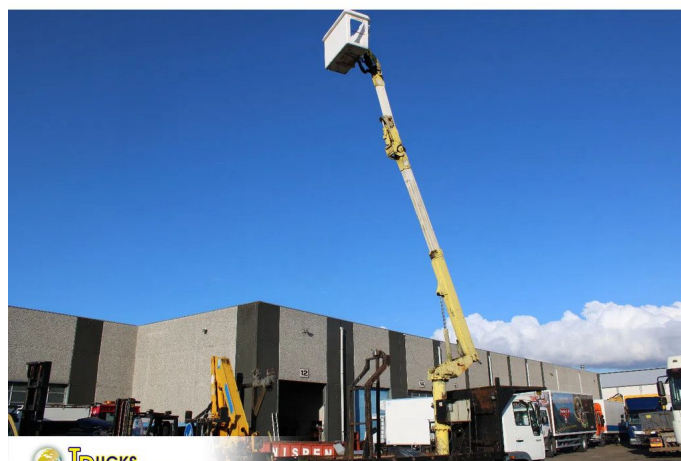


MAN + EURO 2 + PTO + CRANE

Construction	Aerial platform
Year	2002
Id	WMAL75ZZZ1Y072964
Vehicle identification number	WMAL75ZZZ1Y072964
Transmission	Manual
Mileage	453.323 km
Fuel	Diesel
Emissionclass	Euro 2
Gross weight	14.000 kg
Load capacity	3.160 kg
Weight	10.840 kg
Accessories	Air conditioning Anti-lock braking system Anti-lock braking system Leaf spring suspension Power take-off (PTO) PTO Radio/cassette player Radio/CD player Speed limiter



Description

WMAL75ZZZ1Y072964