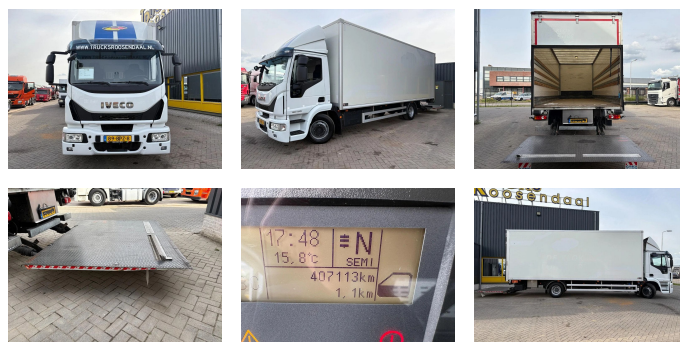


## Iveco 120E21 + LIFT + euro 6

<b>Construction</b>	Box body
<b>Year</b>	2020
<b>Id</b>	TR1732
<b>Vehicle identification number</b>	ZCFAH1EF902708311
<b>Axle configuration</b>	4x2
<b>Axle count</b>	2
<b>Transmission</b>	Automatic
<b>Mileage</b>	407.113 km
<b>Fuel</b>	Diesel
<b>Emissionclass</b>	Euro 6
<b>Power</b>	152 kW (206 PK)
<b>Gross weight</b>	11.990 kg
<b>Load capacity</b>	4.634 kg
<b>Weight</b>	7.456 kg
<b>Length</b>	925 cm
<b>Width</b>	255 cm
<b>Accessories</b>	Automatic Tail lift



### Description

Do you have any questions or suggestions? Please feel free to contact us. We guarantee a response within 8 hours.

Prices do not include VAT.

No rights may be derived from the information provided.

Office phone number: +31165398949

Mobile: +31657945247 (Dutch - English - German - French - Spanish - Italian) Available via WhatsApp and Viber.

Mobile: +31623880596 Available via WhatsApp and Viber.

When paying by bank transfer, the funds must be transferred



T.: [+31 \(0\)165 39 89 49](tel:+3120165398949)

E.: [info@trucksroosendaal.nl](mailto:info@trucksroosendaal.nl)

Gewenten 37

4704 RE, Roosendaal

Netherlands

to our bank account listed below. Always verify the payment details on our website. Please contact us if you have received different information.

If in doubt, please call us so we can verify the invoice and/or payment.

Bank details:

Bank name: ING

Bank address: Bijlmerdreef 106 1102 CT Amsterdam

IBAN number: NL97INGB0117176699

EORI/VAT/TAX: NL810574901B(01)

BIC/SWIFT: INGBNL2A