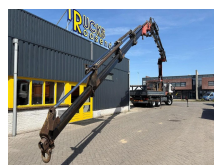
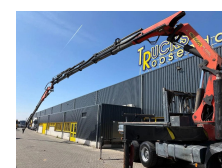


## Volvo + 6X6 + PALFINGER PK44002 6x + JIB 4x + MANUAL + REMOTE

<b>Construction</b>	Crane
<b>Year</b>	2002
<b>Id</b>	TR1760
<b>Vehicle identification number</b>	YV2J4DME52A543465
<b>Axle configuration</b>	6x6
<b>Axle count</b>	3
<b>Transmission</b>	Manual
<b>Mileage</b>	313.928 km
<b>Fuel</b>	Diesel
<b>Emissionclass</b>	Euro 3
<b>Power</b>	279 kW (380 PK)
<b>Gross weight</b>	26.000 kg
<b>Load capacity</b>	12.100 kg
<b>Weight</b>	13.900 kg
<b>Accessories</b>	All wheel drive



### Description

Crane

Number of hydraulic extensions: 10

Number of manual extensions: 2

Number of support legs: 4

Remote control: ?

Meter capacity: 26 m

Capacity kilo: 12160 kg

= Dealer information =

<p>Do you have any questions or suggestions? Please feel free to contact us. We guarantee a response within 8 hours.</p></p><p>Prices do not include VAT.</p></p>

<p>No rights may be derived from the information provided.</p><p>Office phone number: +31165398949

Mobile: +31657945247 (Dutch - English - German - French - Spanish - Italian) Available via WhatsApp and



T.: [+31 \(0\)165 39 89 49](tel:+31623880596)

E.: [info@trucksroosendaal.nl](mailto:info@trucksroosendaal.nl)

Gewenten 37

4704 RE, Roosendaal

Netherlands

Viber. Mobile: +31623880596 Available via WhatsApp and Viber. When paying by bank transfer, the funds must be transferred to our bank account listed below. Always verify the payment details on our website. Please contact us if you have received different information. If in doubt, please call us so we can verify the invoice and/or payment. Bank details:

Bank name: ING

Bank address: Bijlmerdreef 106 1102 CT Amsterdam

IBAN number: NL97INGB0117176699

EORI/VAT/TAX: NL810574901B(01)

BIC/SWIFT: INGBNL2A