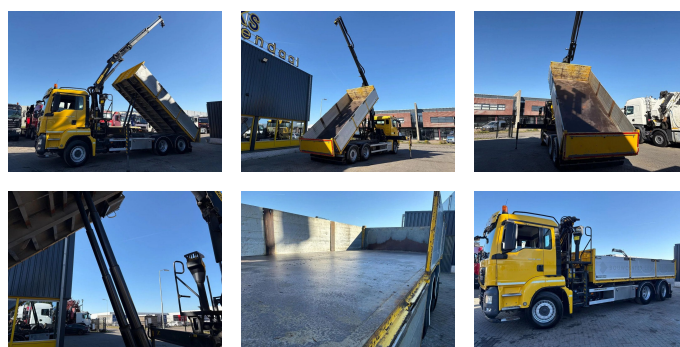


MAN 26,400 + PALFINGER 16001 + TIPPER + 6X2 STEERING + EURO 6

Construction	Crane
Year	2015
Id	TR1780
Vehicle identification number	WMA18SZZ7FP062234
Axle configuration	6x2
Axle count	3
Transmission	Automatic
Mileage	347.076 km
Fuel	Diesel
Emissionclass	Euro 6
Power	294 kW (400 PK)
Gross weight	28.000 kg
Load capacity	14.535 kg
Weight	13.565 kg
Length	858 cm
Width	255 cm
Accessories	Aluminium fuel tank Anti-lock braking system Automatic Coupling Fog lights Radio/cassette player Towbar Trailer coupling



Description

Crane
 Number of hydraulic extensions: 2
 Number of support legs: 2
 Remote control: x
 Rotator: ?
 Meter capacity: 11 m



T.: [+31 \(0\)165 39 89 49](tel:+3165398949)

E.: info@trucksroosendaal.nl

Gewenten 37

4704 RE, Roosendaal

Netherlands

Capacity kilo: 4050 kg

= More information =

Tipper: Back

= Dealer information =

<p>Do you have any questions or suggestions? Please feel free to contact us. We guarantee a response within 8 hours.</p><p>Prices do not include VAT.</p><p>No rights may be derived from the information provided.</p><p>Office phone number: +31165398949</p><p>Mobile: +31657945247 (Dutch - English - German - French - Spanish - Italian) Available via WhatsApp and Viber.</p><p>Mobile: +31623880596 Available via WhatsApp and Viber.</p><p>When paying by bank transfer, the funds must be transferred to our bank account listed below. Always verify the payment details on our website. Please contact us if you have received different information.</p><p>If in doubt, please call us so we can verify the invoice and/or payment.</p><p>Bank details:</p><p>Bank name: ING</p><p>Bank address: Bijlmerdreef 106 1102 CT Amsterdam</p><p>IBAN number: NL97INGB0117176699</p><p>EORI/VAT/TAX: NL810574901B(01)</p><p>BIC/SWIFT: INGBNL2A</p>