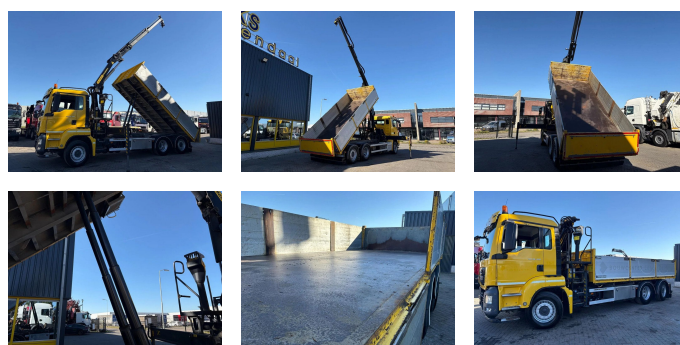


## MAN 26,400 + PALFINGER 16001 + TIPPER + 6X2 STEERING + EURO 6

<b>Construction</b>	Tipper
<b>Year</b>	2015
<b>Id</b>	TR1780-A
<b>Vehicle identification number</b>	WMA18SZZ7FP062234
<b>Axle configuration</b>	6x2
<b>Axle count</b>	3
<b>Transmission</b>	Automatic
<b>Mileage</b>	347.076 km
<b>Fuel</b>	Diesel
<b>Emissionclass</b>	Euro 6
<b>Power</b>	294 kW (400 PK)
<b>Gross weight</b>	28.000 kg
<b>Load capacity</b>	14.535 kg
<b>Weight</b>	13.565 kg
<b>Length</b>	858 cm
<b>Width</b>	255 cm
<b>Construction length</b>	580 cm
<b>Construction width</b>	248 cm
<b>Construction height</b>	77 cm
<b>Accessories</b>	Aluminium fuel tank Anti-lock braking system Automatic Coupling Fog lights Radio/cassette player Towbar Trailer coupling





T.: [+31 \(0\)165 39 89 49](tel:+3120165398949)

E.: [info@trucksroosendaal.nl](mailto:info@trucksroosendaal.nl)

Gewenten 37

4704 RE, Roosendaal

Netherlands

## Description

Crane

Number of hydraulic extensions: 2

Number of support legs: 2

Remote control: x

Rotator: ?

Meter capacity: 11 m

Capacity kilo: 4050 kg

= More information =

Bodywork: Tipper with crane

Tipper: Back

= Dealer information =

<p>Do you have any questions or suggestions? Please feel free to contact us. We guarantee a response within 8 hours.</p><p>Prices do not include VAT.</p><p>No rights

may be derived from the information provided.</p><p>Office phone number: +31165398949

Mobile: +31657945247 (Dutch - English - German - French - Spanish - Italian) Available via WhatsApp and

Viber.</p><p>Mobile: +31623880596 Available via WhatsApp and Viber.</p><p>When paying by bank transfer, the funds must be transferred to our bank account listed below. Always

verify the payment details on our website. Please contact us if you have received different information.</p><p>If in doubt,

please call us so we can verify the invoice and/or payment.</p><p>Bank details:

Bank name: ING

Bank address: Bijlmerdreef 106 1102 CT Amsterdam

IBAN number: NL97INGB0117176699

EORI/VAT/TAX: NL810574901B(01)

BIC/SWIFT: INGBNL2A</p>