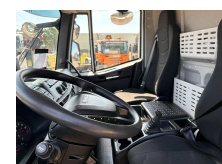


Iveco 120E 210 + DHOLLANDIA LOAD LIFT + EURO 6 + 12T

| | |
|--------------------------------------|--|
| Construction | Box body |
| Year | 2020 |
| Id | TR1459 |
| Vehicle identification number | ZCFAH1EF002708617 |
| Axle configuration | 4x2 |
| Axle count | 2 |
| Transmission | Automatic |
| Mileage | 396.388 km |
| Fuel | Diesel |
| Emissionclass | Euro 6 |
| Power | 154 kW (210 PK) |
| Gross weight | 11.990 kg |
| Load capacity | 4.634 kg |
| Weight | 7.456 kg |
| Length | 925 cm |
| Width | 255 cm |
| Construction length | 742 cm |
| Construction width | 248 cm |
| Construction height | 261 cm |
| Accessories | Automatic Central locking EBS Electrically adjustable door mirrors Electrically operated windows Radio/CD player Tail lift |



Description

= Additional options and accessories =



T.: [+31 \(0\)165 39 89 49](tel:+3165398949)

E.: info@trucksroosendaal.nl

Gewenten 37

4704 RE, Roosendaal

Netherlands

- Tailgate

= Dealer information =

Do you have any questions or suggestions? Please feel free to contact us. We guarantee a response within 8 hours.

Prices do not include VAT.

No rights may be derived from the information provided.

Office phone number: +31165398949

Mobile: +31657945247 (Dutch - English - German - French - Spanish - Italian) Available via WhatsApp and Viber.

Mobile: +31623880596 Available via WhatsApp and Viber.

When paying by bank transfer, the funds must be transferred to our bank account listed below. Always verify the payment details on our website. Please contact us if you have received different information.

If in doubt, please call us so we can verify the invoice and/or payment.

Bank details:

Bank name: ING

Bank address: Bijlmerdreef 106 1102 CT Amsterdam

IBAN number: NL97INGB0117176699

EORI/VAT/TAX: NL810574901B(01)

BIC/SWIFT: INGBNL2A