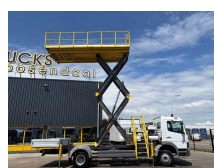


Mercedes-Benz 1318 + 10 METER HEIGHT + tunnel/mine edition + manual

Construction	Aerial platform
Year	2004
Id	TR1902
Vehicle identification number	WDB9700671K962342
Axle configuration	4x2
Axle count	2
Transmission	Manual
Mileage	80.000 km
Fuel	Diesel
Emissionclass	Euro 3
Power	132 kW (180 PK)
Gross weight	13.500 kg
Load capacity	3.510 kg
Weight	9.990 kg
Length	8.485 cm
Accessories	Anti-lock braking system Radio/CD player



Description

= Additional options and accessories =

- Beacon(s)

= Dealer information =

Do you have any questions or suggestions? Please feel free to contact us. We guarantee a response within 8 hours.

Prices do not include VAT.

No rights may be derived from the information provided.

Office phone number: +31165398949



T.: [+31 \(0\)165 39 89 49](tel:+3165398949)

E.: info@trucksroosendaal.nl

Gewenten 37

4704 RE, Roosendaal

Netherlands

Mobile: +31657945247 (Dutch - English - German - French - Spanish - Italian) Available via WhatsApp and Viber.

Mobile: +31623880596 Available via WhatsApp and Viber.

When paying by bank transfer, the funds must be transferred to our bank account listed below. Always verify the payment details on our website. Please contact us if you have received different information.

If in doubt, please call us so we can verify the invoice and/or payment.

Bank details:

Bank name: ING

Bank address: Bijlmerdreef 106 1102 CT Amsterdam

IBAN number: NL97INGB0117176699

EORI/VAT/TAX: NL810574901B(01)

BIC/SWIFT: INGBNL2A